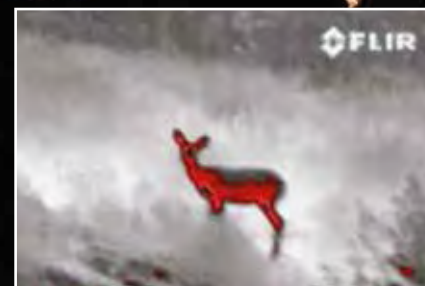




Handheld thermal imaging cameras for outdoor activities and wildlife observation



# FLIR SCOUT-Series

## Handheld thermal night vision cameras

Thermal imaging cameras make extremely small temperature differences visible. Based on these temperature differences they create a clear image. Furthermore, thermal contrast is extremely difficult to mask. This means that during nighttime you will clearly see animals that are hidden in trees or bushes. Their natural camouflage will not help them to hide anymore.

Thermal imaging cameras are widely used by professional documentary makers and hunters worldwide. The Scout Series are now bringing thermal imaging cameras within reach of nature for wildlife enthusiasts and hunters.



Spot downed game



Observe wildlife



Secure your camping grounds



Locate missing people



Find livestock

## A large number of applications

Being able to see in the darkest of nights is an advantage for every nature explorer and outdoor enthusiast. Compact, lightweight FLIR thermal imaging cameras provide clear, crisp thermal imagery from dawn to dusk and through the dead of night. They fit easily and naturally into the palm of your hand and feature easy operation making them an ideal choice for sportsmen, hikers, ranchers, rangers, or backyard nature enthusiasts. If you can't bear to miss a thing while exploring the great outdoors, FLIR thermal imaging cameras satisfy your thirst for adventure.

You can traverse rough terrain to scope out the "perfect spot" at dusk, before dawn and even when it's pitch black outside. You can discover nocturnal animals, find wandering members of your party, locate lost livestock or spot downed game. You can use the FLIR thermal imaging cameras to help see through light fog, smoke or trail dust. In addition, during day time wildlife spotters can locate animals standing in tall grass or hiding partly behind bushes or trees.





## Thermal imaging versus image intensification (I<sup>2</sup>)

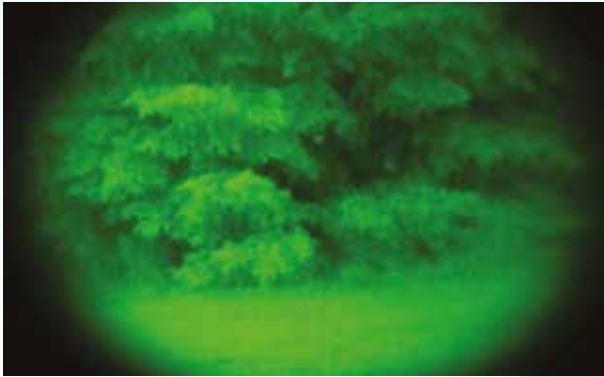
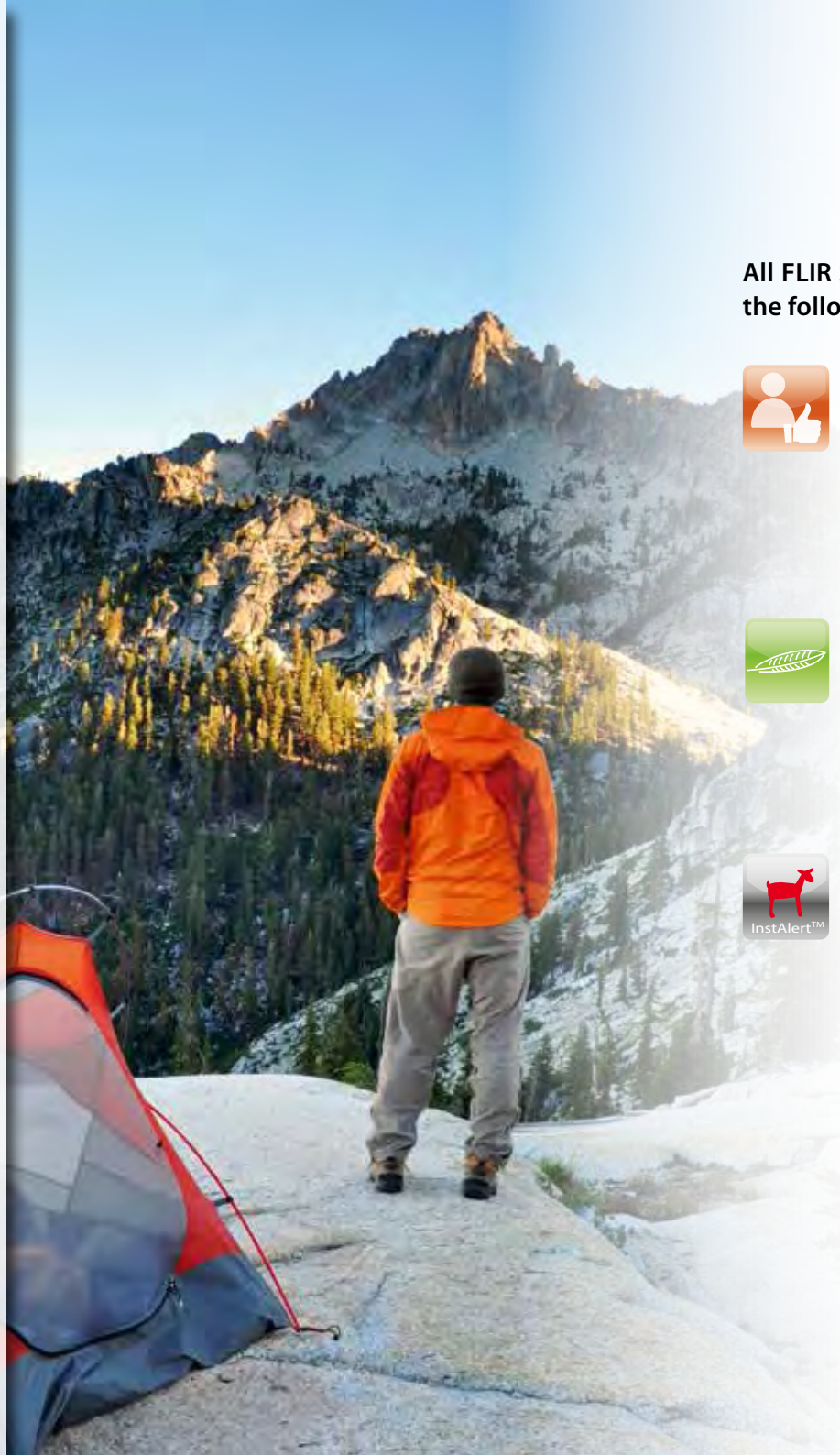


Image intensification: person hiding in bushes is practically invisible.



Thermal imaging: person hiding in bushes is clearly visible since thermal contrast is practically impossible to mask.

Image intensification, also referred to as I<sup>2</sup> technology, amplifies small amounts of visible light thousands of times so that objects can be seen at night. Image intensification does require a certain level of ambient light, but even starlight can produce an image on a cloudless night. Because the system requires at least a minimum level of ambient light, conditions such as heavy overcast can limit its effectiveness. Similarly, too much light may overwhelm the system and reduce its effectiveness. Thermal imaging cameras offer substantial benefits over image intensification. They work by detecting the heat energy being radiated and need no light at all to produce a clear image in the darkest environments. Thermal imaging cameras are not affected by the amount of light so that you will not be blinded when looking at a light source.



All FLIR Scout thermal imaging cameras have the following features:



### Easy-to-operate

Ergonomic and easy-to-use, Scout thermal imaging cameras are fully controlled with the buttons on top of the unit. Conveniently placed the buttons are all right underneath your fingertips.



### Extremely portable and rugged

The FLIR Scout-Series are extremely compact and extremely light systems. They are ideal for go-anywhere operations, in all circumstances. They are IP67 rated.



### InstAlert™

The unique InstAlert feature colors the hottest parts of the scene red. This makes it extremely easy to spot animals in the thermal image.





# FLIR Scout TK

Ultra-compact, low cost,  
thermal night vision camera

The FLIR **Scout TK** is a pocket-sized thermal vision monocular for exploring the outdoors at night and in lowlight conditions. Scout TK reveals your surroundings and helps you see people, objects and animals over 90m away. Simple to use, with still image and video recording, Scout TK is the perfect companion, whether in the outdoors or for security.



## Extremely affordable

The FLIR Scout TK makes thermal imaging extremely affordable. Price is no longer an issue. You no longer need to use a less effective night vision technology.



## Pocket Size & Light-weight

Small enough to fit in your pocket, making the TK easy to carry along with all your other equipment.



## Good for Short Range use

The FLIR Scout TK can detect a human at a distance of 130m away.



## DDE Image processing

160 x 120 resolution plus enhanced image processing - FLIR's proprietary Digital Detail Enhancement (DDE)



## Image and Video Capture

Capture and share still images or video and view/playback on the camera.



## Long battery life

The FLIR Scout TK comes with long-life rechargeable Li-Ion batteries. The Scout TK has a typical operating time of 5 hours on a single load.



## Rugged and Reliable

1m drop tested and IP67, the Scout TK is made for outdoor use. Combined with FLIR's reputation for quality build and excellent 3 yr warranty (10yr for detector) and you have a camera fit for purpose.



## Multiple Colour Palettes

Choose from multiple colour palettes to suit environmental conditions with optimal contrast (White/Black hot, Instalert, Graded Fire, Iron & more)



## High quality LCD viewfinder

.640x480 pixel LCD screen provides crisp imagery



## Scout TK Operation

Choose from multiple palette colours depending to suit environment:

- White/Black hot
- Instalert
- Graded fire
- Iron
- Rainbow HC
- Lava
- Arctic

Dioptre control for adjusting to your eyesight

Capture image or video button. Also the "select" button for menu navigation

On/Off button, for quick 3s startup. Also the menu start/close button

Choose from 5 levels of brightness to optimise your display

USB socket for charging Lithium Ion battery. Also for connecting to PC to export images or update firmware.





# FLIR Scout-Series

Ultra-compact handheld thermal night vision cameras



The FLIR Scout-Series thermal imaging camera gives every outdoor enthusiast the power to see clearly in total darkness. It can be used for many applications. Whether you are hiking, observing animals or camping, you will be able to see in total darkness.

After sunset, a lot of animals are active. With the help of a thermal imaging camera like the Scout-Series you will be able to monitor their activities. The Scout-Series will not only help you to find animals in total darkness but during daylight as well.

## Extremely affordable



The FLIR Scout-Series are more affordable than ever, making adding one to your kit an easy choice.

## Frame Rate Options



<9Hz as standard for easy export.

>30Hz to 60Hz versions possible on many models - contact FLIR dealer for options.

## Crisp thermal images

The FLIR Scout-Series are equipped with an uncooled, maintenance-free, 17um pixel VOx microbolometer detector. VOx detectors offer the advantage over a-Si detectors of being sun-safe (getting the sun in the image won't damage the detector). They also offer a less "noisy" image.

640  
x  
512

320  
x  
240

240  
x  
180

FLIR Scout 640 produces superb thermal image quality of 640 x 512 pixels. Users that do not need this high resolution can choose the Scout-320 or Scout 240 (320 x 240 and 240 x 180 images).

All cameras are equipped with advanced internal camera software that delivers a crisp image without the need

## LED tasklight



The FLIR Scout-Series comes with a LED tasklight on the front of the unit. It can be used to illuminate a small area.

## Long battery life



The FLIR Scout-Series comes with long-life rechargeable Li-Ion batteries. The FLIR Scout-Series has a typical operating time of 5 hours on a single load.

## Good range performance



The FLIR Scout-640 can detect a human at a distance of 1140 meters away. The Scout-640 also comes with a 4x digital zoom so that you can have a closer look at the situation when necessary.

## High quality lcd viewfinder



.640x480 pixel LCD screen provides crisp imagery

## Video output



Composite video output via usb socket to screen or dvr



**Different versions available**

|   | Scout II 240     | Scout II 320     | Scout II 640     |
|---|------------------|------------------|------------------|
| See without being seen                        | ✓                | ✓                | ✓                |
| Video Output via USB socket (Composite video) | No               | ✓                | ✓                |
| Freeze Frame                                  | ✓                | No               | No               |
| Image quality                                 | 240 x 180 pixels | 336 x 256 pixels | 640 x 512 pixels |
| Digital zoom                                  | No               | x2               | x4               |

The right palette for any environment:

- White hot
- Black hot
- InstAlert™

Choose from 5 levels of brightness to optimize your display.

LED tasklight helps guide your way when viewer is powered off.

Freeze Frame (Scout-240 only)  
Digital Zoom (Scout 320 2x)  
(Scout 640 4x)

USB Connectivity recharges a Lithium ion battery.  
Video output for Scout 320 & 640 models

Standard Tripod Mount







# SCOUT II

THERMAL HANDHELD CAMERA

**Scout II** is a compact thermal night vision camera built for the great outdoors. Scout II detects the body heat of animals and people in any terrain, day or night. Track game, recover downed animals, watch for predators, and stay aware of your surroundings after darkness falls. With a high resolution LCD display, video out (320 and 640 models) and a choice of magnifications, Scout II empowers you to experience wild places like never before.



The World's Sixth Sense™





## SEE AT NIGHT IN ANY TERRAIN

Bright LCD screen displays animals and people in total darkness

- 13 mm (240 model) and 19 mm (320 model) lenses provide broad situational awareness
- Detects heat signatures up to 550 meters away, depending on model
- 640 x 480 pixel LCD screen displays crisp and clear imagery
- Produces better scene contrast than I<sup>2</sup> night vision



## GRAB AND GO SIMPLICITY

Starts up in seconds, no training required

- Easy-to-use menu: Power, Polarity, Zoom, and LCD Brightness
- Up to 2X e-zoom (320 model)
- Freeze Frame feature (240 model)
- Detection palettes: White Hot, Black Hot, and InstAlert™
- Utility light for finding items dropped in the dark



## COMPACT AND RUGGED

Fits in any pack, withstands hard drops and shallow water

- Fits easily in the palm of your hand
- Light weight, only 12 ounces
- Weather-tight, ergonomic design
- >5-hour Internal Li-Ion battery



|  | Scout II 240                                   | Scout II 320                 | Scout II 640                 |
|--|--|------------------------------|------------------------------|
| Detector Type  | 240 x 180 VOx Microbolometer                   | 336 x 256 VOx Microbolometer | 640 x 512 VOx Microbolometer |
| Video Refresh Rate   | <9Hz NTSC                                      |                              |                              |
| Field of View (H x V)  | 24° x 18° NTSC                                 | 17° x 13° NTSC               | 18° x 14° NTSC               |
| Focal Length   | 13 mm Fixed Focus                              | 19mm Fixed Focus             | 35mm Fixed Focus             |
| Start up   | < 1.5 seconds                                  |                              |                              |
| Waveband   | 7.5 - 13.5 μm                                  |                              |                              |
| Thermal Sensitivity  | <50 mK @ f/1.0                                 |                              |                              |
| Image Processing   | FLIR Proprietary Digital Detail Enhancement™   |                              |                              |
| <b>USER INTERFACE</b>  |  |                              |                              |
| Zoom Button  | Freeze Frame                                   | 2X Zoom                      | 2X, 4X Zoom                  |
| Black Hot/White Hot  | BH/WH/InstAlert™                               |                              |                              |
| Brightness   | Adjusts display Brightness Setting             |                              |                              |
| Task Light   | LED Enabled during Power off state             |                              |                              |
| <b>SYSTEM SPECIFICATIONS</b>   |  |                              |                              |
| Display  | 640 X 480 LCD Display                          |                              |                              |
| Video Output   | NTSC composite video (Switchable to PAL w/GUI) |                              |                              |
| Image Polarity   | White Hot/Black Hot/InstAlert™; Selectable     |                              |                              |
| <b>POWER</b>   |  |                              |                              |
| Battery Type   | Internal Li-Ion Cell                           |                              |                              |
| Battery Life (Operating)   | >5 Hours                                       |                              |                              |
| <b>ENVIRONMENTAL</b>   |  |                              |                              |
| Rating   | IP-67, Submersible                             |                              |                              |
| Operating Temp.  | -4°F to 122°F (-20°C to 50°C)                  |                              |                              |
| Storage Temp.  | -40°F to 140°F (-40°C to 60°C)                 |                              |                              |
| Drop   | 1 m drop                                       |                              |                              |
| <b>PHYSICAL</b>  |  |                              |                              |
| Weight (incl. lens)  | 12 oz (340 g)                                  |                              |                              |
| Size (L x W x H)   | 6.70" x 2.31" x 2.44"                          |                              |                              |
| <b>RANGE PERFORMANCE</b>   |  |                              |                              |
| Detect Man (1.8 m x 0.5 m)   | 383yd(350m)                                    | 600yd(550m)                  | 1246yd(1140m)                |
| <b>PACKAGES INCLUDE</b>  |  |                              |                              |
| Handheld Thermal Camera, USB Power Adapter/Charger, Wrist strap, Custom Video out cable (320 & 640 version), USB Cable, Quick Start Guide, Molle bag |  |                              |                              |

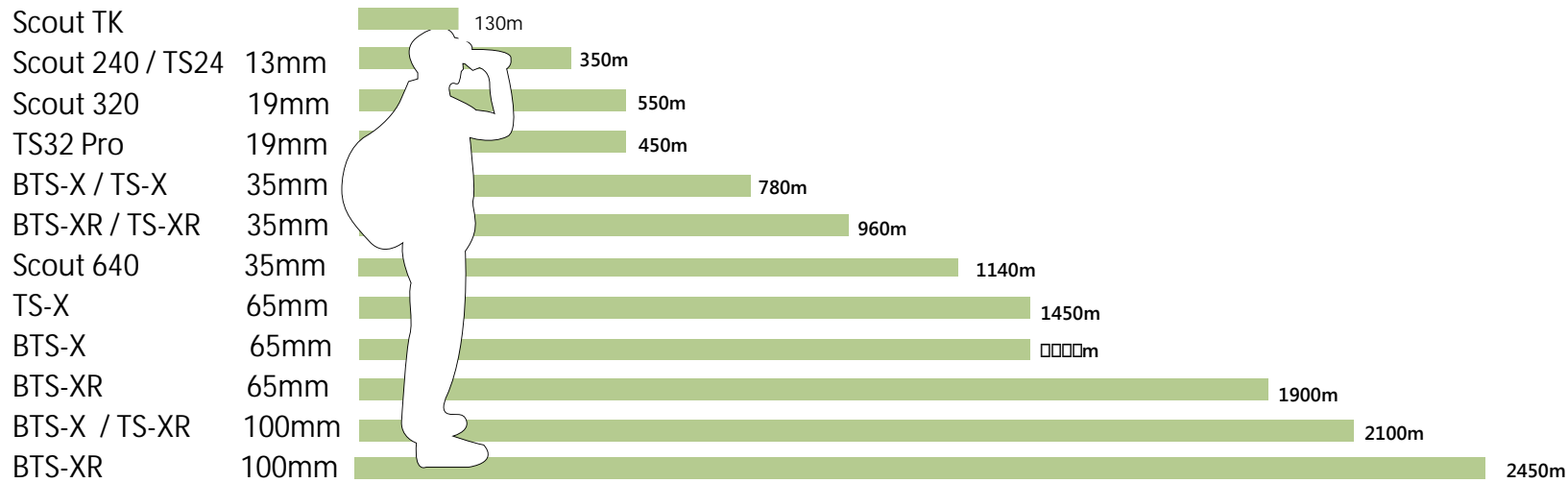


The World's Sixth Sense™

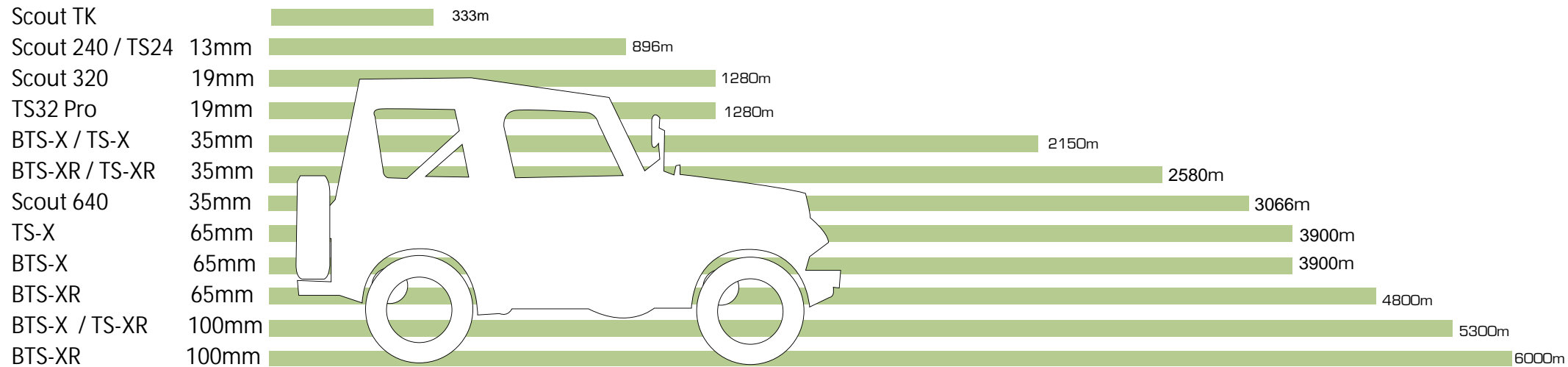


# Range performances

## Detect man-Sized Target (1.8 m x 0.5 m)



## Detect Small Vehicle (2.3 m x 2.3 m)





 FLIR



[Euroopticafrica.co.za](http://Euroopticafrica.co.za)