

Euroopticafrica.co.za

SEE THE HEAT



OUTDOOR VISION

FLIR makes a full range of thermal and night vision products for every kind of mission, patrol or search. See what you have been missing with FLIR outdoor vision cameras and scopes.

2016



WE ARE HEAT-SEEKERS

Thermal energy is just a fancy way to say “heat.” Thermal cameras detect heat, which means they don’t need visible light to see. And nobody knows thermal imaging like we do. Militaries around the world have relied on our technology for years, and thermal cameras aren’t strictly military hardware anymore.



THERMAL OR NIGHT VISION?

Thermal cameras are sometimes confused with Night Vision Goggles (NVGs), but they are very different technologies. While thermal cameras make pictures from differences in heat, NVGs make pictures from small amounts of visible light.





FLIR [FLEER]

NOUN

1. The largest designer and producer of thermal imaging cameras, components and sensors globally.
2. The World's Sixth Sense

Over the past 40 years, FLIR has produced and delivered over 100,000 FLIR sensors, and thousands more radars and CBRNE sensors, for customers in more than 75 nations. This rich history of delivering the most technologically advanced solutions now also enables FLIR to provide quality products for professional and personal use.



THERMAL 101

2016

OUTDOOR VISION

THERMAL NIGHT VISION

Hunting & Outdoor

THE NEW

SCOUT

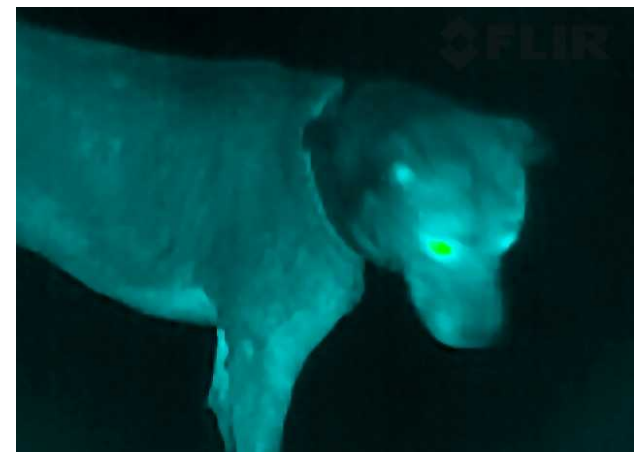
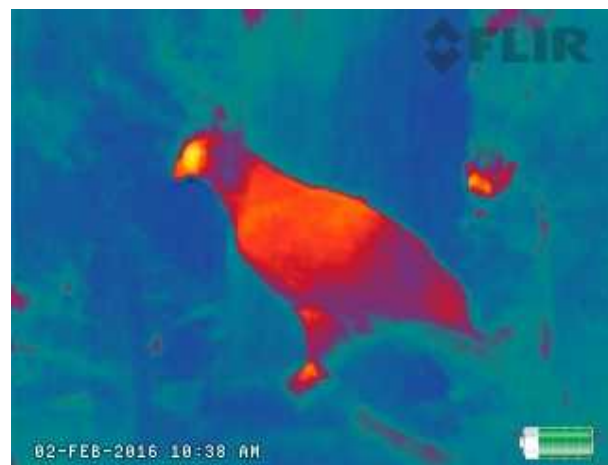
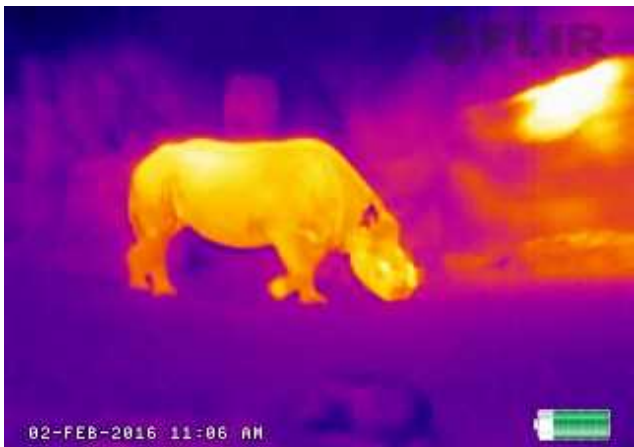


YOU LOVE THE NIGHTLIFE

Whatever you're looking to do — see interesting animals, stop predators from harming your livestock, or find a member of your party in the woods — thermal night vision will help you get it done. Happy hunting.

Field Notes

FLIR imaging technology can improve an animal search by helping you see them clearly in any conditions, day or night, in fog or camouflaged.



SCOUT II

A compact, lightweight hand-held thermal camera, Scout II provides clear, crisp thermal imagery from dawn to dusk — and through the dead of night. And now, Scout II features a 640 resolution display and video out (320 model).



SCOUT TS

The TS-Series provides exceptional thermal performance and value. With resolutions of 240 or 320, the TS-Series is available with a 19 mm or 65 mm lens (TS32R only), and optional on-board video. It's the perfect tool for expedition leaders, wildlife management professionals, and ranchers to observe animals at night.



SCOUT BTS

The Scout BTS Bi-Ocular camera offers outdoor enthusiasts the ultimate in thermal imaging, using both eyes. Available with a 320 or 640 sensor, the BTS-Series features swappable 35, 65, and 100 mm lenses, a full-coverage eyepiece, and ergonomic comfort.

FOR COMPLETE PRODUCT LINE AND SPECS SEE PAGES 12-15

THE NEW
SCOUT
TK



O U T D O O R V I S I O N

2016

O U T D O O R V I S I O N

OUTDOOR 2016



SPECS	SCOUT TK	SCOUT II 240	SCOUT II 320	SCOUT II 640	SCOUT TS 32/PRO
DETECTOR	160 x 120	240 x 180	320 x 240	640 x 512	320 x 240
LENS		13 mm	19 mm	35 mm	19 mm / with 2x Extender
FIELD OF VISION	20° x 16°	24° x 18°	17° x 13°	18° x 14°	24° x 18° / 12° x 9°
DETECTION RANGE Man-Sized Target	130 m	350 m	550 m	1140 m	440 m/880 m with 2x extender
ZOOM	No	No	2x	2x, 4x	2x
VIDEO CAPABLE	Save images & video	No	NTSC Video Out	NTSC or Pal Video out	NTSC or Pal Video out / SD card

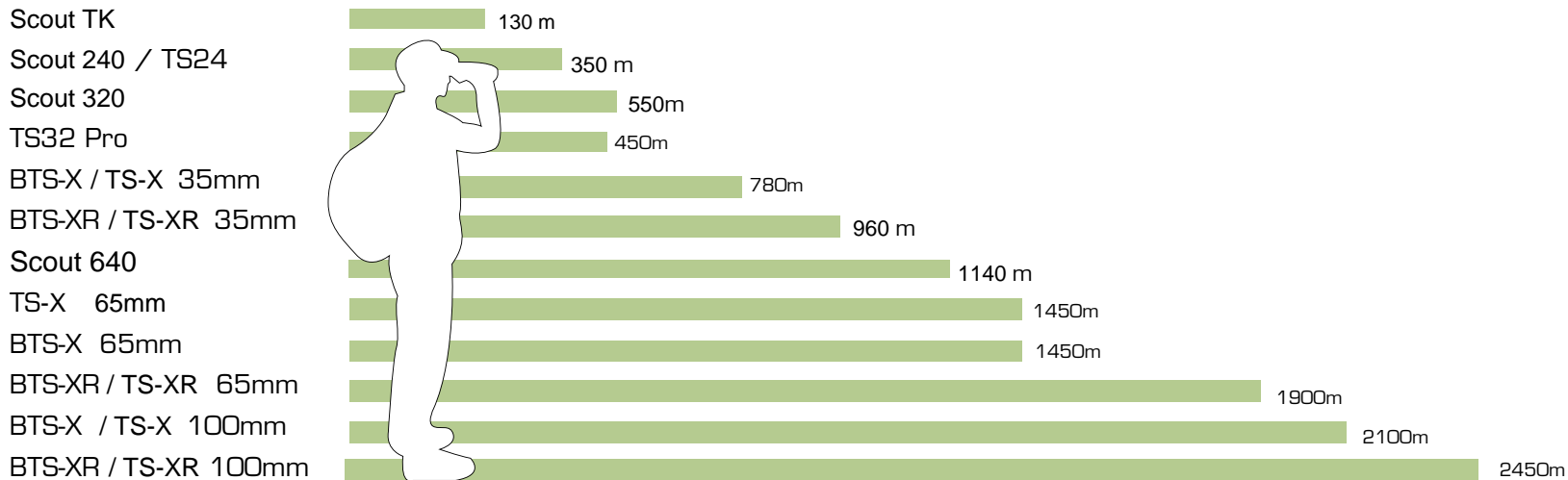


SPECS	SCOUT TS-X 320	SCOUT TS-XR 640	SCOUT BTS-X PRO	SCOUT BTS-XR PRO
DETECTOR	320 x 240	640 x 480	320 x 240	640 x 480
LENS	35 / 65 / 100 mm	35 / 65 / 100 mm	35 / 65 / 100 mm	35 / 65 / 100 mm
FIELD OF VISION	13° x 10° / 7° x 5° / 5° x 3°	13° x 10° / 7° x 5° / 5° x 3°	13° x 10° / 10° x 8° / 6° x 4°	13° x 10° / 10° x 8° / 6° x 4°
DETECTION RANGE Man-Sized Target	910 yds. / 1695 yds. / 2625 yds. (830 m / 1550 m / 2400 m)	1140 yds. / 2080 yds. / 3225 yds. (1040 m / 1900 m / 2950 m)	910 yds. / 1695 yds. / 2625 yds. (830 m / 1550 m / 2400 m)	1140 yds. / 2080 yds. / 3225 yds. (1040 m / 1900 m / 2950 m)
ZOOM	2x	2x	2x & 4x	7° x 5°
VIDEO CAPABLE	NTSC or Pal Video out / SD card	NTSC or Pal Video out / SD card	NTSC or Pal Video out / SD card	NTSC or Pal Video out / SD card

Range performances

Euroopticafrica.co.za

Detect Man-Sized Target (1.8 m x 0.5 m)



Detect small object (2.3 m x 2.3 m)

